



# THE LION'S ROAR

The monthly newsletter for Penn State Berks

## Important Dates

### SUMMER SESSION I\* [May 13 - June 21]

- May 6 - June 14: Intent to Graduate Activation Period (for summer graduation only)
- May 12: Registration Deadline
- May 13: Classes Begin\*
- May 15: Regular Drop Deadline at 11:59pm\*
- May 16: Regular Add Deadline at 11:59pm\*
- May 22: For those enrolled in PSU summer classes only
  - Summer Bill Due
  - Installment Payment Plan (IPP) enrollment deadline\*\*
- May 27: Memorial Day Holiday: **No Classes/Campus Closed**
- June 12: Late Drop Deadline at 11:59pm\*
- June 19: Juneteenth Holiday: **No Classes/Campus Closed**
- June 21: Withdrawal Deadline at 5pm | Classes End\*
- June 22: Installment Payment Plan (IPP) payment #2
- June 24: Final Exams

### SUMMER SESSION II\* [June 26 - August 7]

- June 25: Registration Deadline
- June 26: Classes Begin\*
- June 28: Regular Drop Deadline at 11:59pm\*
- June 29: Regular Add Deadline at 11:59pm\*
- July 4: Independence Day Holiday: **No Classes/Campus Closed**
- July 22: Installment Payment Plan (IPP) payment #3
- July 29: Late Drop Deadline at 11:59pm\*
- Aug. 7: Withdrawal Deadline at 5pm | Classes End\*
- Aug. 9: Final Exams\*

### SNEAK PEEK: FALL 2024

- Aug. 12 - Sept. 10: Intent to Graduate Activation Period (for December graduation only)
- Aug 23: First-year student move-in (residential students)
- Aug. 26: New Student Convocation at 12:15pm | Classes Begin
- Aug. 28: Fall Bill Due
- Sept. 2: Labor Day Holiday - No Classes
- Nov 24 - Nov 30: Thanksgiving Holiday - No Classes
- Dec. 13: Classes End
- Dec 16 - 20: Final Exams

\*Start, end, late drop, & exam dates may vary by course. Confirm in LionPATH, speak with an Academic Adviser, or consult Penn State's [Summer 2024 Academic Calendar](#).

\*\* If students enrolled in the Installment Payment Plan (IPP) by the first payment (5/22), their second, and third installments are due on the 22nd of the two subsequent months. Learn more at [Payment Options | Office of the Bursar \(psu.edu\)](#)



## What's Inside

- Important Dates (p.1)
- Big Changes Coming (p.1)
- Mental Health Resources (p.1)
- Academic Advising: Summer Support (p.2)
- Tips for Accessing Course Materials (p.2)
- Common Read for First-Year Students (p.2)
- Staying Connected Over the Summer (p.3)
- Summer Hours by Location (p.3)
- Understanding the Transfer Credit Tool (p.3)

## MENTAL HEALTH RESOURCES

While the Counseling Services Office at Berks is not available during the summer, the office wants to share a list of resources for students to explore over the summer months. If applicable, check with your insurance provider to learn about the mental health benefits available to you.

**ruOK Berks Crisis Text Line** Text ruOK to 484-816-7865

**National Suicide Prevention Lifeline** 1-800-273-8255 or 988

**Trevor Project Lifeline for the LGBTQ+ Community** 866-488-7386

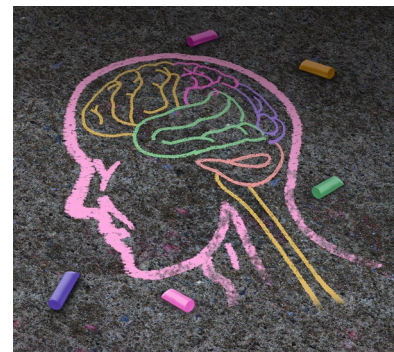
**SafeBerks Hotline for DV/SA Survivors** 844-789-7233

**Penn State Berks Campus Police** 610-396-6111 or 911 (for on-campus concerns)

**Penn State Crisis Line** 877-229-6400

**National Crisis Text Line** Text LIONS to 741741

**Holcomb (Berks County Crisis Line)** 610-379-2007



## BIG CHANGES COMING: OFFICES ARE MOVING THIS SUMMER

Heads up! Some resource and staff offices are relocating this summer. Before visiting any office on campus, reach out ahead of time to verify the location and hours and avoid any mix-ups!

## ACADEMIC ADVISING SPOTLIGHT:



## SUMMER ACADEMIC ADVISING SUPPORT

Many faculty members are away for the summer. If your assigned academic adviser's name is NOT listed below, they may have limited or no availability this summer. If you cannot reach your assigned adviser, contact the Academic Advising Center (the staff listed below) for help this summer.

- Paula Plageman
- Sue Costa
- Karen Del Vecchio
- Aubrey Edwards
- Michael Stella



Visit <https://berks.psu.edu/academics/academic-advising-center> to access each adviser's Starfish calendar link!

## TIPS FOR ACCESSING COURSE MATERIALS



After registering for courses, access your course materials list (i.e., textbook & supply lists) on LionPATH.

- On the student homepage, start at the CLASS SCHEDULE and click MORE (in blue text).
- On the new page in CLASS SCHEDULE, select the appropriate semester (if applicable) and click CONTINUE.
- On the new page, click VIEW BOOKS at the top of the screen. You will be redirected to the Penn State Bookstore website to view your course materials list.

## TIPS FOR SUCCESS

- Secure your course materials early.
- Shop around with legitimate vendors to find the best price.
- Check Thun Library Course Reserves! You can borrow (for FREE) many textbooks and required course materials for 2 hours at a time! Visit <https://libraries.psu.edu/services/course-reserves> to see if your course materials are on reserve!

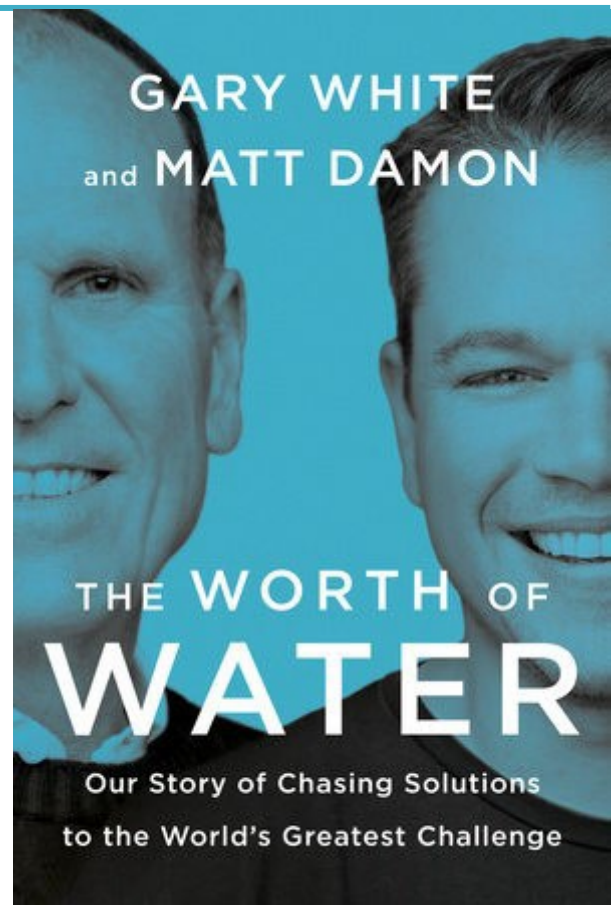
## COMMON READ: FOR FIRST-YEAR STUDENTS NEW TO BERKS!

The Common Reading Program introduces you to college academics and fosters community among first-year students. It offers an enjoyable read and emphasizes the importance of reading in your college experience.

**WHEN SHOULD I READ THE BOOK?** You should complete the common reading selection over the summer and before orientation at the beginning of the fall semester. Pick up your FREE common reading book at the Hintz Bookstore during New Student Orientation (NSO)!

**SAVE THE DATE:** Common Reading Week is October 7 through October 11. Enjoy various workshops and activities surrounding the book theme!

Learn more about the Common Reading Program at <https://berks.psu.edu/academics/special-programs/common-reading-program>



## STAYING CONNECTED OVER THE SUMMER

Many campus resources are open during the summer! Get connected in advance of the semester for a smoother start!



### ACADEMIC ADVISING:

For questions about course scheduling, degree progress, changing your major, or general advising policies. Email:

[bkadvisingcenter@psu.edu](mailto:bkadvisingcenter@psu.edu)

Phone: 610-396-6280

### BURSAR:

For questions about your bill or payment options. Email:

[bkbursar@psu.edu](mailto:bkbursar@psu.edu)

Phone: 610-396-6040

### CAREER SERVICES:

For questions about resume writing, and internship and employment planning. Email:

[ncl102@psu.edu](mailto:ncl102@psu.edu)

Phone: 610-396-6368

### FINANCIAL AID:

For questions about aid, holds, or to do list items. Email:

[BerksFinAid@psu.edu](mailto:BerksFinAid@psu.edu)

Phone: 610-396-6070

### HOUSING & FOOD

**SERVICES:** For help with ID Cards and Housing Contracts. Email:

[HousingBK@psu.edu](mailto:HousingBK@psu.edu)

For help with meal plans and food services, including reporting food allergies. Email:

[absfoodservicebk@psu.edu](mailto:absfoodservicebk@psu.edu)

### LEARNING CENTER:

For help with time management and study skills. Email: Sonia Delaquito at

[scd14@psu.edu](mailto:scd14@psu.edu)

### STUDENT AFFAIRS:

For questions about getting involved in student clubs and activities at Penn State Berks. Email:

[BKStudentAffairs@psu.edu](mailto:BKStudentAffairs@psu.edu)

### STUDENT DISABILITY

**RESOURCES:** To discuss learning accommodations. Email: Lisa Zackowski at

[lkz3@psu.edu](mailto:lkz3@psu.edu)

## SUMMER HOURS BY LOCATION

### BEAVER ATHLETICS AND WELLNESS CENTER

**Monday-Friday from 10:00am-4:00pm**

**Closed on Saturday and Sunday**

The BAWC will be closed during all university holidays and from Monday, July 1 through Friday, July 5.

### HOUSING AND FOOD SERVICES

**(Tully's, Cyber Cafe, Creekside)**

Due to renovations, Housing and Food Services will not be open to students during the summer.

### HINTZ BOOKSTORE

**Monday-Thursday from 10:00am-3:00pm**

**Friday from 10:00am-2:00pm**

**Closed on Saturday and Sunday**

The Hintz Bookstore will be closed during all university holidays.

### THUN LIBRARY

**Monday-Friday from 9:00am-4:00pm**

**Closed on Saturday and Sunday**

Thun Library will be closed during all university holidays and Friday, July 5.

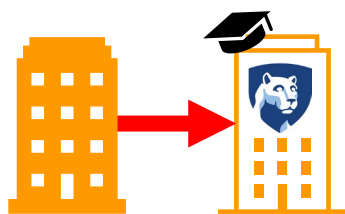
### ENROLLMENT MANAGEMENT

**(Financial Aid and Admissions)** office is relocating! Due to the transition, the team will work primarily

remotely with at least one staff member on campus in Franco 155 or 156. The team is available

**Monday-Friday from 8:00am-5:00pm.** Walk-ins are welcome but we

strongly encourage appointments (in-person or via Zoom) to make sure we can best serve students.



## UNDERSTANDING THE TRANSFER CREDIT TOOL

*The Transfer Credit Tool allows students to see how courses taken at other universities transfer to Penn State.*

### Who should use the Transfer Credit Tool?

- Students considering taking courses for their degree at another institution, for example during the summer.
- Students who need a course for their degree that isn't offered during a particular semester.

### How will the Transferring Credit Tool help me?

- Search for courses at other institutions
- Find Penn State course equivalents
- See how a course transfers to Penn State
- Find General Education courses

### What should I keep in mind?

The Transfer Credit Tool only indicates whether a course equivalent exists at another institution. It does not include information about the cost or availability of courses. Students should connect with the non-PSU institution for information about enrollment timelines, cost, and course availability.

### How do I access the Transfer Credit Tool?

- On your student dashboard in LionPATH, click TRANSFER CREDIT. You will be redirected to a new page. Click TRANSFER CREDIT TOOL on the menu.
- Visit <https://admissions.psu.edu/info/accepted/transferring-credits-tool/>
- Conduct an internet search: "Penn State Transfer Credit Tool"